



Fetal Cardiology

Fundraising Auxiliary Groups Education Seminar
Thursday, May 4, 2023

Hannah Bressner, BSN, RN
Fetal Cardiac Nurse Coordinator



Agenda

- Introduction
- Program Summary
- Recent Highlights
- Opportunities for Growth





Vision Statement

To be the premier institute for transformational, comprehensive care of patients with cardiothoracic disease and be recognized for outstanding care, leadership, and innovation.

Heart Institute Service Offerings

The Heart Institute presents a unique intersection of subspecialties, ancillary services, and intersectional clinics to deliver comprehensive care to patients.

CARE DELIVERY



Outpatient



CVOR



Inpatient (CTICU)



Dickinson Center

SUBSPECIALTIES



Cardiothoracic Surgery



Transplant & VAD



ECHO



Heart Failure



Single Ventricle



Fetal Cardiology



Interventional Cardiology



Electrophysiology



Advanced Imaging



Pulmonary Hypertension



Home Monitoring Program



Kawasaki & MIS-C

INTERSECTIONAL PROGRAMS



Neuro-developmental



Aerodigestive



Cardio-Oncology



ACHD / Transitional



Research & Teaching



3D Printing



Genomics

SUPPORT



Cardiac Family Advisory Council

Meet Our Team



Heather Sun, MD



Rachel McCandless, MD



Fraser Golding, MD



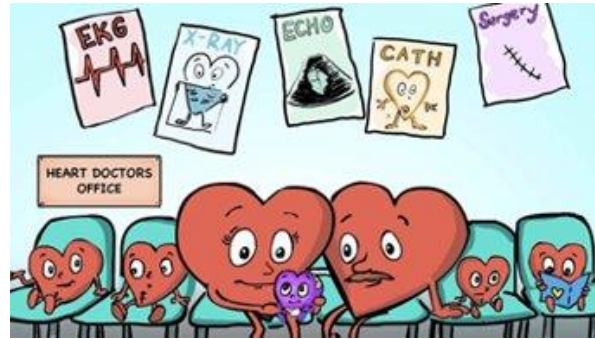
Eleanor Schuchardt, MD



Hannah Bressner, RN
Coordinator

Fetal Cardiac Sonographers:
Breanne McGuffey, Dan Dyar, Heather Hart, Forrest Olson, Lisa Vargas

Fetal Scheduler: Crystal Gordon



Rady
Children's Heart Institute

The Fetal Cardiology Program

At the Rady Children's Heart Institute we detect heart conditions in fetuses as early as 14 weeks gestation. Our proactive approach allows us to build a tailored prenatal and postnatal care and delivery plan that addresses a baby's unique needs every step of the way.



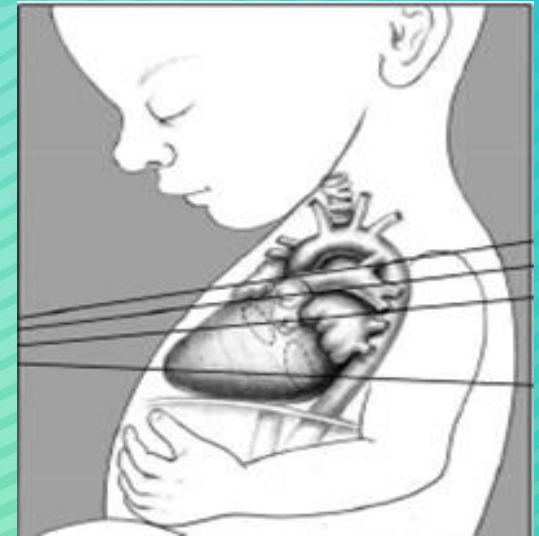
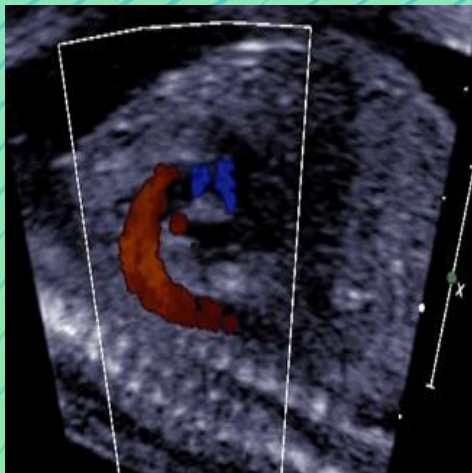
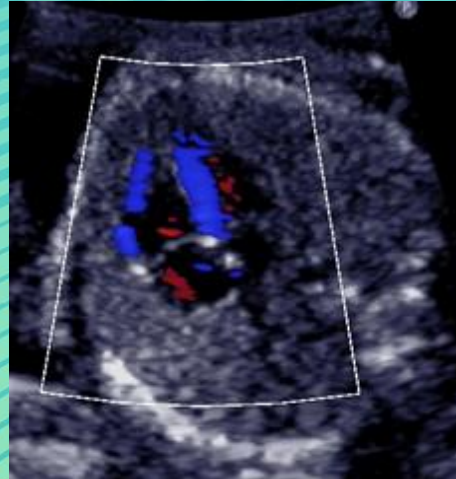
Our Role within the Heart Institute:

- Care of mothers and their fetuses with fetal cardiac disease
- Initial / prenatal diagnosis of congenital heart disease
- In utero management of CHD, fetal arrhythmias, and secondary cardiac disease
- Educate and provide counseling to families
- Guide pregnancy decisions, management, delivery planning



The Fetal Cardiology Program at Rady Children's Hospital-San Diego

Offering Comprehensive Fetal Cardiac Care, Delivery Planning
and Transition to Neonatal Care After Cardiac Diagnosis



Services

Fetal Echocardiogram	Fetal Cardiologist Consultation
Personalized Delivery Planning	Support and Concierge Care Coordination
Comprehensive Fetal Cardiac Care	Transition into Neonatal Care After Diagnosis



Evolution of Rady Children's Fetal Cardiology Program



2013

**Fetal
Cardiologists
Hired**

Fetal Imaging Growth:
Hiring of 1st Fetal
trained cardiologists
Drs. Sun and
McCandless



2017

**Program
Established**

Fetal Cardiology clinic
established
Dr. Sun appointed
Director of Fetal
Cardiology Program

Murrieta Fetal
Cardiology Clinic
established



2018

**Team
Development**

Collaboration with
regional perinatology
groups



Fetal Navigator hired
to support prenatal
families
Worked closely with
Fetal Cardiology team

Recruitment of
Drs. Golding &
Schuchardt



2019



2020

COVID

Out of region referrals
decline

First Telemedicine
Fetal Cardiology Visit



2021

**Fetal Cardiac
Program
growth**

Fetal Cardiology
Dashboard developed



2022

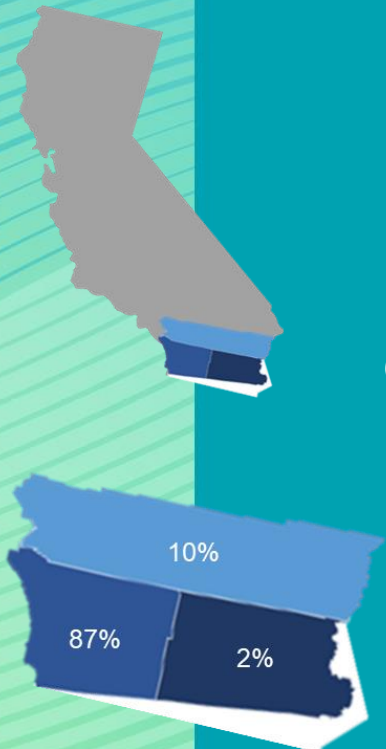
**Dedicated
Fetal Cardiac
RN Coordinator**

Hannah Bressner, RN
hired at Rady
Children's

Fetal Cardiology Volumes

99% of patients who saw a fetal cardiologist in the Clinic live in California

Of those patients from California

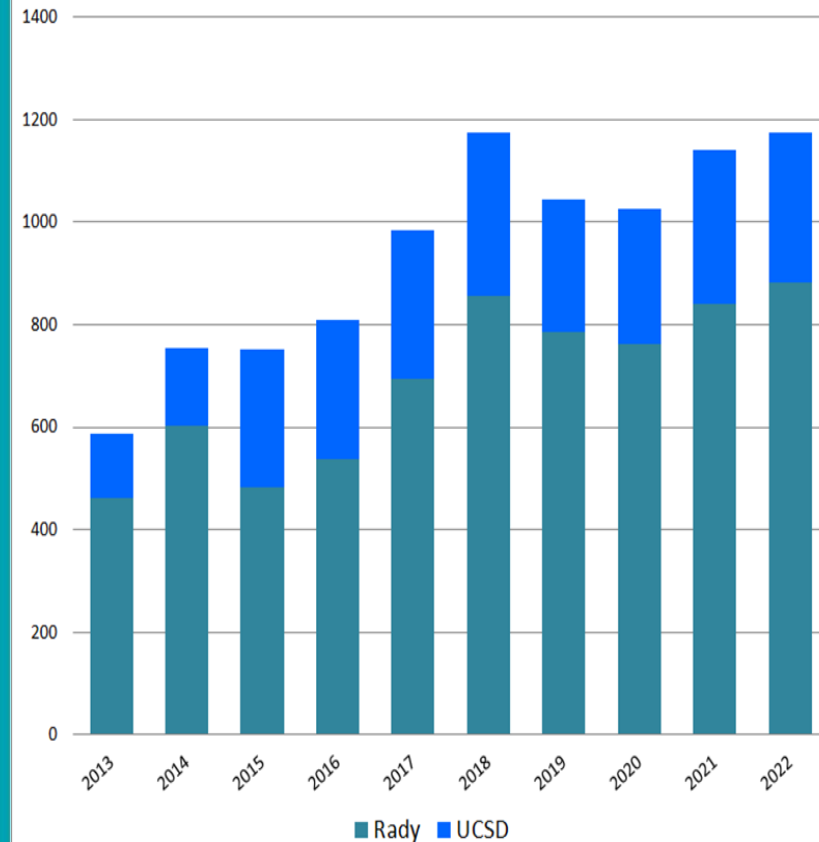


San Diego County 87%

Riverside County 10%

Imperial County 2%

Annual Fetal Cardiology Program Volume



Fetal Cardiac Nurse Coordinator

What is a Fetal Nurse Coordinator?

- Typically, a registered nurse or nurse practitioner who provides personalized care for patients and their families after a fetal anomaly is diagnosed.
- As there are many different divisions in healthcare, there are many areas where a fetal care coordinator could be useful.

Why hire a Fetal Nurse Coordinator?

- Make families feel supported during a stressful time in their lives.
- Help patients navigate the healthcare system and all the appointments, terminologies, and many intricacies it has.
- Create a sense of connection deeper than doctors and appointments.

Heart Institute



Welcome to Fetal Cardiology!

I'm Hannah, your Fetal Cardiac Nurse Coordinator.

I would love to explain my role and how I will be supporting you through this journey!

Rady Children's Hospital provides families with the services of a Fetal Cardiac Nurse Coordinator when your baby has been diagnosed with congenital heart disease (CHD).

In this role, I provide personalized care for you and your family during this pregnancy. I can support you with education and resources to help you and your family prepare for your delivery and your baby's care at Rady Children's Hospital after birth.

There are many appointments that go hand in hand with a CHD diagnosis. I work closely with your team of fetal and pediatric specialists at Rady Children's Hospital, your obstetrician and/or perinatologist, and your delivery hospital to help you navigate all these appointments and make sure you have a smooth transition of care.

As your Fetal Cardiac Nurse Coordinator, I will:

- Be directly available to answer questions and concerns. My work phone number is 858-576-1700, extension 223535. If you cannot reach me at my desk on Monday-Friday from 8am-5pm, I am also available via my personal cell phone at 815-822-8390. **In medical emergencies, please call 911.**
- Help ensure there is an understanding of related medical conditions and treatment plan.
- Provide resources, mental health, and emotional support by connecting patients & families with social and community support systems.
- Provide coordination of care by communicating with all areas of your care team.

My goal as your Fetal Cardiac Nurse Coordinator is to ensure you feel supported and help guide you through this journey. I look forward to working with you and your family!

Sincerely,

Hannah Bressner, BSN, RN
Rady Children's Hospital Fetal Cardiac Nurse Coordinator



Psychosocial support

Rady Children's
Heart Institute



Fetal Cardiology Journey Board



1st Visit to Fetal Cardiology:
Diagnosis made



Follow-up visits with
Fetal Cardiologist



Other specialty consultations,
as needed

Specialty Consultations,
as needed:



Cardiothoracic
Surgeon



Home Monitoring
Program



Interventional
Cardiologist



Neonatology



Tour of Cardiothoracic
Intensive Care Unit at
Rady Children's Hospital



Await Delivery!



Baby in Rady Children's
CTICU



Baby Delivery
Congratulations!



Induction of Labor OR
Scheduled C-Section

	Resource Needs Questions	Please circle
	Do you have reliable transportation to doctor appointments?	Yes No Sometimes
	Do you have a reliable job?	Yes No
	Do you worry about paying for medications and doctor appointments?	Yes No Sometimes
	Are you stressed about providing food for your family?	Yes No Sometimes
	Do you ever need help reading hospital materials?	Yes No Sometimes
	Did you graduate high school, or get a GED?	Yes No Sometimes
	Are you afraid you might be hurt in your apartment building, home, or neighborhood?	Yes No Sometimes
	Do you feel stressed about your relationships with your family and friends?	Yes No Sometimes
	Do you wish you had someone to talk to about your pregnancy, other than family and friends?	Yes No Sometimes
	In the last year, have you received assistance from an organization or program to help you with any of the following? (Please Circle) Transportation Food Housing	

“Closing the Loop”

as a Fetal Cardiac Nurse Coordinator

Create meaningful relationships

Connect current patients with previous

Draw families back to the organization

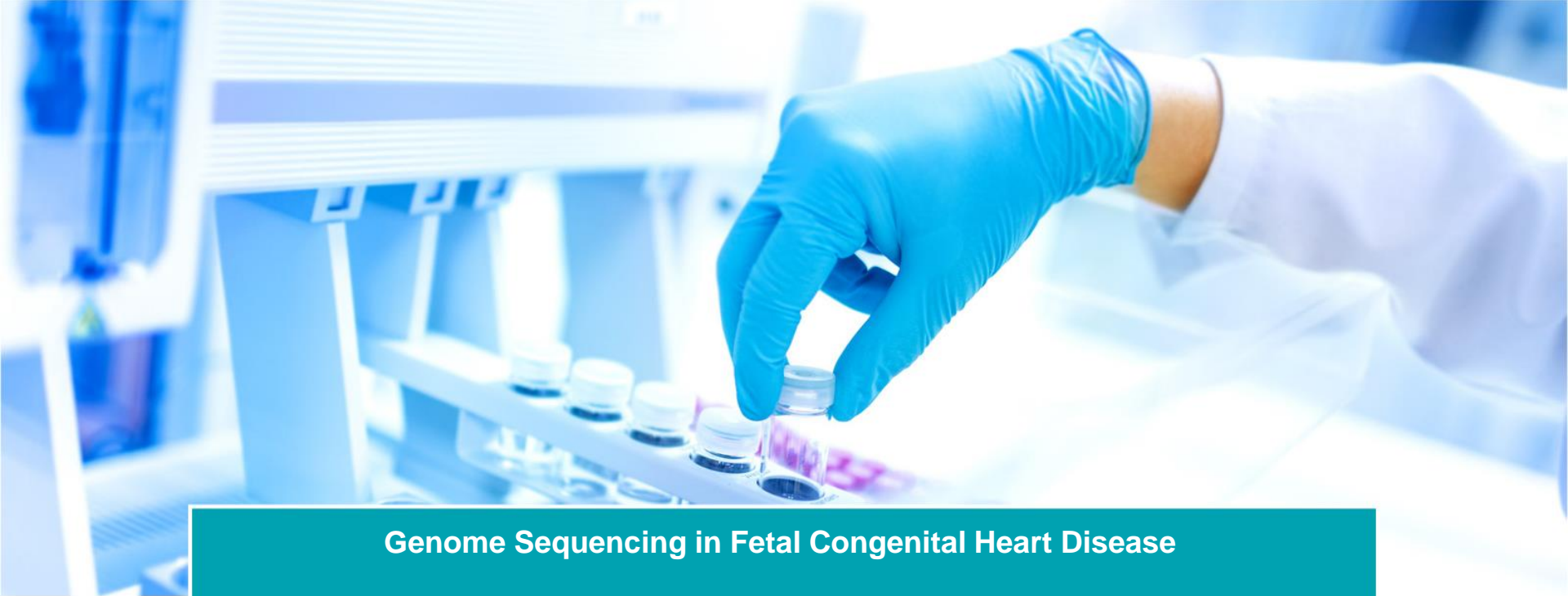


Opportunities for Growth

Fetal Cardiology Team Support

- Social Worker
- Genetic Counselor
- Coordinators





Genome Sequencing in Fetal Congenital Heart Disease

This study will look at genetic information from fetuses diagnosed with congenital heart disease, or a structural problem with the heart, diagnosed in pregnancy. This study will use whole genome sequencing information from the fetus and both parents to diagnose genetic diseases with information gathered before delivery.

This information will be available to families and obstetric and pediatric care providers to help with healthcare decisions. This study will also look at if the genetic testing results were helpful to families and healthcare providers.

Research Collaboration

Q & A

Thank you!

